

## AMENITIES

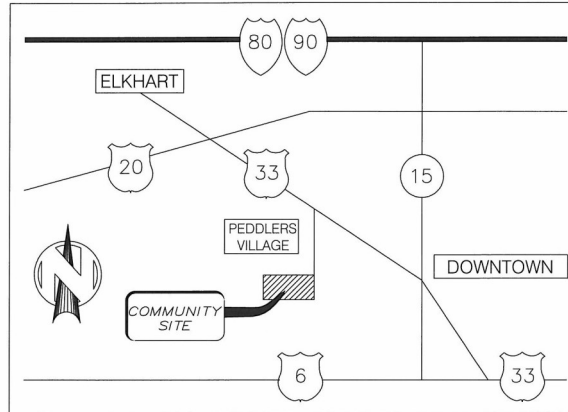
- ◇ 1, 2, 3 & 4 Bedroom Floor Plans
- ◇ Energy Efficient Appliances, HVAC & Windows
- ◇ Full-Size Washer/Dryer Hook Ups
- ◇ Ceiling Fans
- ◇ Private Patio/Balcony
- ◇ Outdoor Storage
- ◇ All-Electric Utilities
- ◇ Carports
- ◇ Gazebo, Picnic Area & Grill
- ◇ Playground, Bike Racks, Basketball Court & Nature Trail
- ◇ Energy Efficient Construction
- ◇ Large Community Building with Exercise Room
- ◇ On-Site Leasing Office
- ◇ On-Site Laundry in Every Building
- ◇ Many Services Offered

Professionally  
managed by:

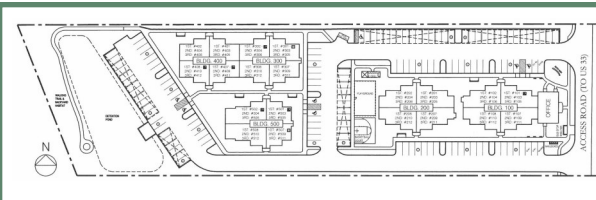


## DIRECTIONS

LOCATED ON US 33 (ELKHART ROAD)  
APPROX. 3.5 MILES NORTH OF DOWNTOWN GOSHEN  
OR  
APPROX. 4.5 MILES SOUTH OF US 20 BYPASS  
WEST SIDE OF ROAD BEHIND PEDDLERS VILLAGE



## PROPERTY LOCATION MAP



2932 Elkhart Road  
Goshen, IN 46526

(574) 535-0438



Corporate Office  
P.O. Box 40518  
Indianapolis, IN 46240



This institution is an equal opportunity provider and employer.

# WELCOME HOME TO MAPLE COURT PLACE!!

## WHAT "AFFORDABLE" MEANS

Maple Court Place offers one, two, three & four bedroom apartments to match your lifestyle and will provide you with all the modern conveniences you desire...  
*at an affordable rent level.*

As providers of affordable housing, we must lease our apartments to households meeting income guidelines set by the federal government.

Income maximums are determined annually and are based on the number of persons living in your household. The combined gross household income cannot exceed specific ranges:

- SEE SITE MANAGER FOR MORE INFORMATION

## FEES & DEPOSIT

|                                |             |
|--------------------------------|-------------|
| Non-refundable application fee | \$25.00     |
| Move-in security deposit       | See Manager |

## A NEW CHOICE

Spread out in the spacious living spaces, cook with reliable appliances and sleep well knowing it's all within your budget! Never thought you'd get the chance to move into a quality apartment? Think again.

Maple Court Place is Goshen's finest choice in affordable housing, with units now available. Traditional three-story buildings feature spacious floor plans, private entries, and plenty of extra storage space for all the little things that make a house a home.

We believe that you should be able to live affordably without sacrificing your standard of living. Whether you are looking for more space, a peaceful place to raise a family, or just a high-quality, affordable apartment,

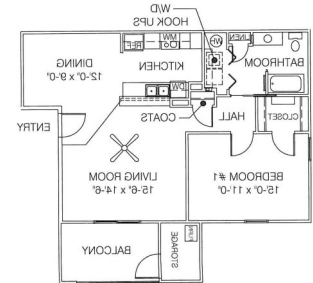
**Maple Court Place will fit your needs.**

Call us today for more information about the next place you'll call home!

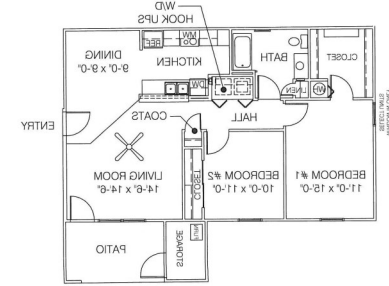
**(574) 535-0438**

## FLOOR PLANS

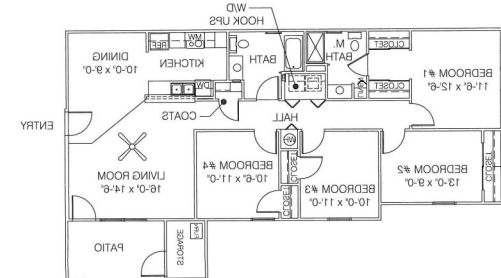
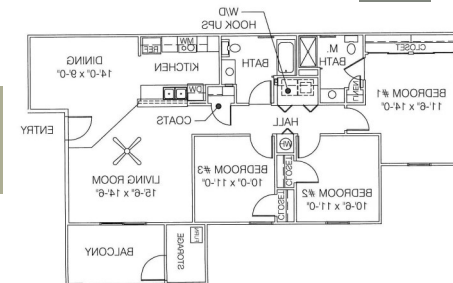
**1B-745 &  
790 ft.<sup>2</sup>**



**2B-921 &  
966 ft.<sup>2</sup>**



**3B-1109 &  
1153 ft.<sup>2</sup>**



**4B-1287 & 1331 ft.<sup>2</sup>**