

## AMENITIES

- ◇ 1, 2 & 3 Bedroom Floor Plans
- ◇ Peaceful, Quiet Community
- ◇ Dishwasher & Microwave
- ◇ Full-Size Washer/Dryer Hook-Ups
- ◇ All Appliances Included
- ◇ Mini-Blinds Included
- ◇ Spacious, Large Walk-In Closets
- ◇ Ample Storage
- ◇ Patio/Balcony
- ◇ Pets under 25 lbs. welcome
- ◇ Playground
- ◇ All-Electric Utilities
- ◇ Water, Sewer & Trash Included
- ◇ On-Site Laundry Facilities
- ◇ 24-Hour Maintenance
- ◇ Close to Shopping

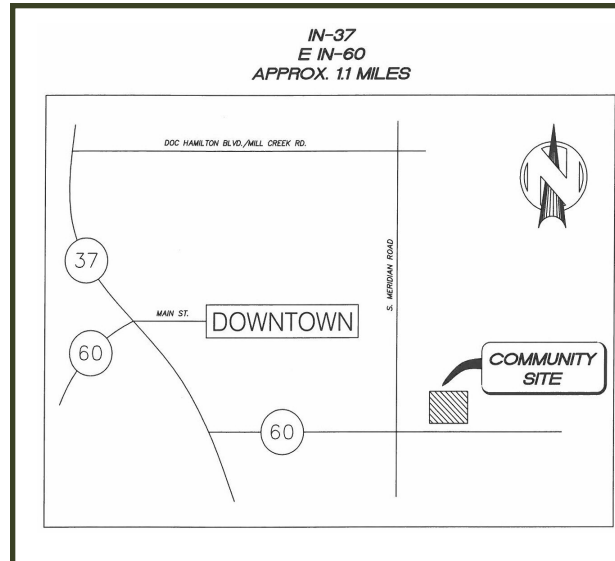
Professionally sponsored by:



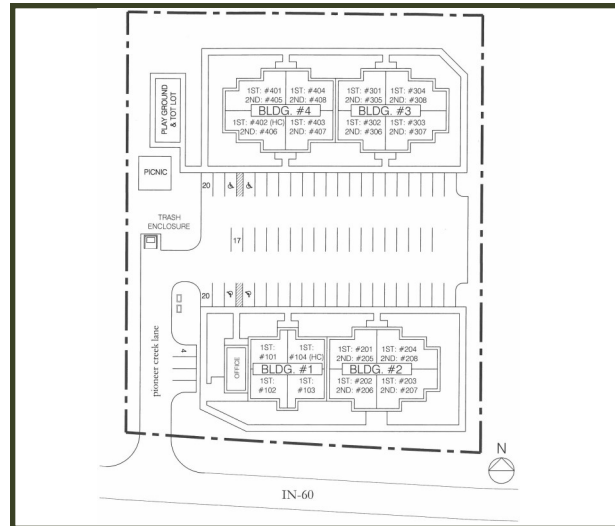
Professionally managed by:



## DIRECTIONS



## PROPERTY LOCATION MAP



# PIONEER CREEK APARTMENTS



100 Pioneer Creek Lane  
Mitchell, IN 47446

(812) 849-1414



Corporate Office  
P.O. Box 40518  
Indianapolis, IN 46240



This institution is an equal opportunity provider and employer.

# WELCOME HOME TO PIONEER CREEK APARTMENTS!!

## WHAT "AFFORDABLE" MEANS

Pioneer Creek Apartments offers one, two and three bedroom apartments to match your lifestyle and will provide you with all the modern conveniences you desire...  
*at an affordable rent level.*

As providers of affordable housing, we must lease our apartments to households meeting income guidelines set by the federal government.

Income maximums are determined annually and are based on the number of persons living in your household. The combined gross household income cannot exceed specific ranges:

- SEE SITE MANAGER FOR MORE INFORMATION

## FEES & DEPOSIT

Non-refundable application fee	\$25.00
Move-in security deposit	See Manager

## A NEW CHOICE

**S**pread out in the spacious living spaces, cook with reliable appliances and sleep well knowing it's all within your budget! Never thought you'd get the chance to move into a quality apartment? Think again.

**P**ioneer Creek Apartments is Mitchell's finest choice in affordable housing, with units now available. Traditional two-story buildings feature spacious floor plans, private entries, and plenty of extra storage space for all the little things that make a house a home.

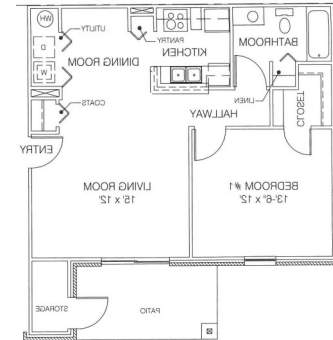
**W**e believe that you should be able to live affordably without sacrificing your standard of living. Whether you are looking for more space, a peaceful place to raise your family, or just a high-quality, affordable apartment,

**Pioneer Creek will fit your needs.**

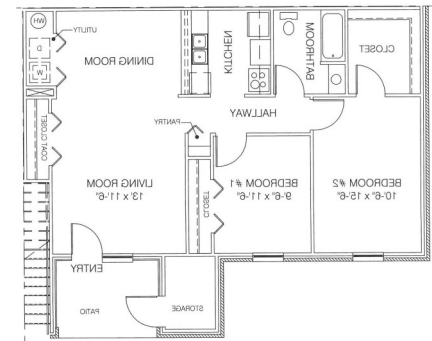
**C**all us today for more information about the next place you'll call home!

**(812) 849-1414**

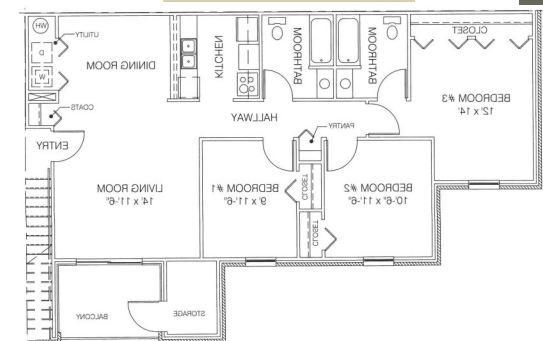
## FLOOR PLANS



**1B-686—828 ft.<sup>2</sup>**



**2B-891—906 ft.<sup>2</sup>**



**3B-1078—1094 ft.<sup>2</sup>**