

## AMENITIES

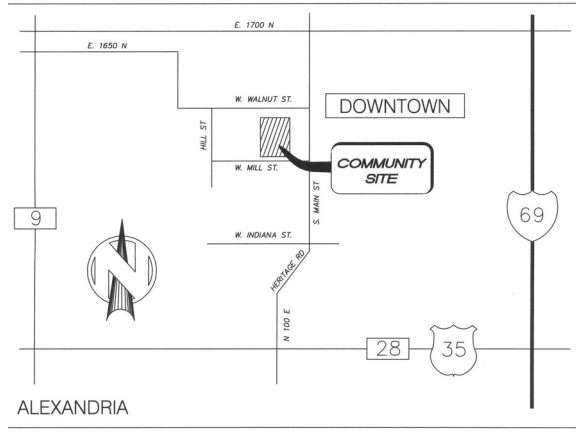
- ◇ 1 & 2 Bedroom Floor Plans
- ◇ Peaceful, Quiet Community
- ◇ Wall-to-Wall Carpeting
- ◇ All Appliances Included
- ◇ Mini-Blinds Included
- ◇ Spacious, Large Walk-In Closets
- ◇ Ample Storage
- ◇ Pets under 25 lbs. welcome
- ◇ All-Electric Utilities
- ◇ Water, Sewer & Trash Included
- ◇ On-Site Laundry Facilities
- ◇ Enclosed Hallways
- ◇ All-Brick Exterior
- ◇ 24-Hour Maintenance

Professionally  
managed by:

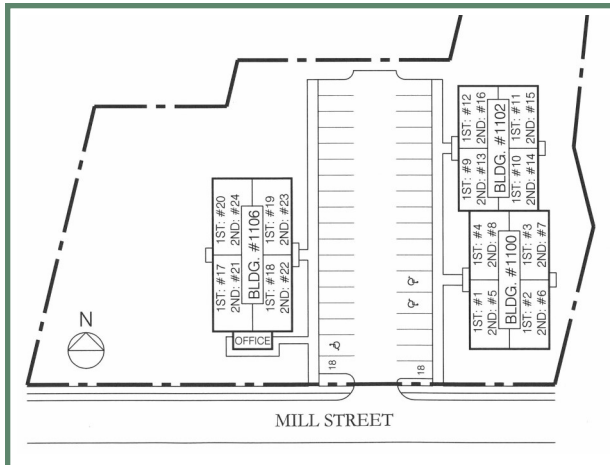


## DIRECTIONS

I-69  
EXIT 245 (ALEXANDRIA/ALBANY)  
W US-35N/IN-28/W SR 28 FOR APPROX. 5.0 MILES  
N 100 E FOR APPROX. 4.5 MILES  
W MILL STREET



## PROPERTY LOCATION MAP



1100 W. Mill Street  
Summitville, IN 46070

(765) 536-4434



Corporate Office  
P.O. Box 40518  
Indianapolis, IN 46240



This institution is an equal opportunity provider and employer.

# WELCOME HOME TO THE VILLAGE APARTMENTS OF SUMMITVILLE!!

## WHAT "AFFORDABLE" MEANS

The Village Apartments of Summitville offers one and two bedroom apartments to match your lifestyle and will provide you with all the modern conveniences you desire...  
*at an affordable rent level.*

As providers of affordable housing, we must lease our apartments to households meeting income guidelines set by the federal government.

Income maximums depend on your county of residence and are based on the number of persons living in your household. The combined gross household income cannot exceed specific ranges:

- SEE SITE MANAGER FOR MORE INFORMATION

## FEES & DEPOSIT

Non-refundable application fee	\$10.00
Move-in security deposit	See Manager

## A NEW CHOICE

**S**pread out in the spacious living spaces, cook with reliable appliances and sleep well knowing it's all within your budget! Never thought you'd get the chance to move into a quality apartment? Think again.

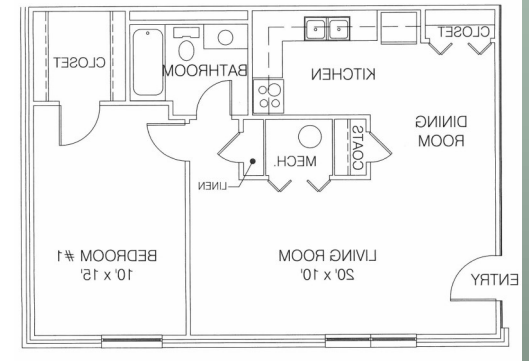
**T**he Village Apartments of Summitville is Summitville's finest choice in affordable housing, with units now available. Traditional two-story brick buildings feature spacious floor plans, interior entries, and plenty of extra storage space for all the little things that make a house a home.

**W**e believe that you should be able to live affordably without sacrificing your standard of living. Whether you are looking for more space, a peaceful place to raise your family, or just a high-quality, affordable apartment, **Village Apartments will fit your needs.**

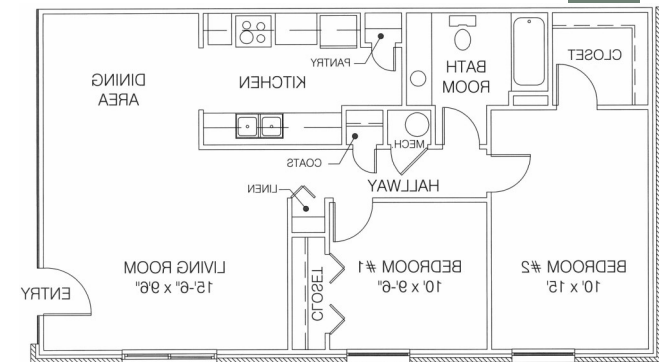
**C**all us today for more information about the next place you'll call home!

**(765)536-4434**

## FLOOR PLANS



**1B-651 ft.²**



**2B-819 ft.²**